

THE OPTIMALITY OF (S,s) POLICIES
IN THE DYNAMIC INVENTORY PROBLEM

BY
HERBERT SCARF

TECHNICAL REPORT NO. 11
APRIL 10, 1959

PREPARED UNDER CONTRACT Nonr-225 (28)
(NR-047-019)
FOR
OFFICE OF NAVAL RESEARCH

APPLIED MATHEMATICS AND STATISTICS LABORATORY
STANFORD UNIVERSITY
STANFORD, CALIFORNIA



THE OPTIMALITY OF (S, s) POLICIES IN THE DYNAMIC
INVENTORY PROBLEM

BY

HERBERT SCARF

TECHNICAL REPORT NO. 11

April 10, 1959

PREPARED UNDER CONTRACT Nonr-225(28)

(NR-047-019)

FOR

OFFICE OF NAVAL RESEARCH

Reproduction in Whole or in Part is Permitted for
any Purpose of the United States Government

APPLIED MATHEMATICS AND STATISTICS LABORATORY
STANFORD UNIVERSITY
STANFORD, CALIFORNIA

THE OPTIMALITY OF (S, s) POLICIES IN THE DYNAMIC
INVENTORY PROBLEM

by

Herbert Scarf

I. Summary.

This paper considers the dynamic inventory problem with an ordering cost composed of a unit cost plus a reorder cost. It is shown that if the holding and shortage costs are linear then the optimal policy in each period is always of the (S, s) type. More general conditions on the holding and shortage costs are given which imply the same result. A similar result is also given in the case of a time lag in delivery.

II. Introduction.

An elaborate discussion of the history and general features of the inventory problem may be found in [2]. We shall content ourselves here with a brief description of the type of model introduced in [1] and discussed by a number of subsequent authors [2,3,4].

A sequence of purchasing decisions is made at the beginning of a number of regularly spaced intervals. These purchases contribute to a buildup of inventories which are then depleted by demands during the various intervals. We shall assume the demands to be independent observations from a common distribution function, though varying distributions may be treated by the same technique.

Various costs are charged during the successive periods and the objective is to select the purchasing decisions so as to minimize the expectation of the discounted value of all costs. There are, generally speaking, three types of costs: a purchasing cost $c(z)$, where z is the amount purchased; a holding cost $h(\cdot)$, which is a function of the excess of supply over demand at the end of the period, and a shortage cost $p(\cdot)$ which is a function of the excess of demand over supply at the end of the period. Holding or shortage costs are charged at the end of every period and purchasing costs are charged when a purchase is made. We shall assume initially that purchases are made only at the beginning of the period and that delivery is instantaneous. In Section IV the case of a time lag in delivery will be discussed.

If the stock level, immediately after purchases are delivered, is y , then the expected holding and shortage costs to be charged during that period are given by

$$(1) \quad L(y) = \int_0^y h(y-\xi) \varphi(\xi) d\xi + \int_y^{\infty} p(\xi-y) \varphi(\xi) d\xi,$$

where φ is the density of the demand distribution.

Let us assume that the inventory problem has a horizon of n periods and that the problem is begun with an initial inventory of x units, where $x \geq 0$. Let $C_n(x)$ represent the expected value of the discounted costs during this n period program if the provisioning is done optimally. (The discount factor will be denoted by α , and will be between 0 and 1.) Then it is easy to see that $C_n(x)$ satisfies the following functional equation:

$$(2) \quad C_n(x) = \text{Min}_{y \geq x} \{c(y-x) + L(y) + \alpha \int_0^{\infty} C_{n-1}(y-\xi)\phi(\xi)d\xi\},$$

and that if $y_n(x)$ is the minimizing value of y in (2), then $y_n(x)-x$ represents the optimal initial purchase. The purpose of this paper will be to show that under surprisingly weak conditions the optimal policy will be of a very simple type.

Let us begin by reviewing some of the work that has been done on the one-period problem ($n = 1$, and $C_0 \equiv 0$). The single-period problem is essentially a problem in the calculus and a considerable amount is known about it, in distinction to the sequential problem [2, Chap. 8]. The simplest case is when the ordering cost is linear, i.e., $c(z) = c \cdot z$. In this case the optimal policy for the single-period model is frequently defined by a single critical number \bar{x} , as follows: If $x < \bar{x}$, buy $\bar{x} - x$, and if $x > \bar{x}$, do not buy. Analogous results frequently hold in the sequential problem, the optimal policy being defined by a sequence of critical numbers $\bar{x}_1, \bar{x}_2, \dots$ [3]. A sufficient condition for these results to hold is that $L(y)$ be convex, a condition which obtains when the holding and shortage costs are each convex increasing functions which vanish at the origin.

The situation is considerably more complex when the ordering cost is no longer linear. We shall concentrate on the simplest type of non-linear cost:

$$(3) \quad c(z) = \begin{cases} 0 & ; z = 0 \\ K + c \cdot z & ; z > 0 . \end{cases}$$

K is usually described as the reorder cost.

With this type of purchasing cost the optimal policy in the single-period model is frequently defined by a pair of critical numbers (S, s) as follows: If $x < s$, order $(S-s-x)$, and if $x > s$, do not order. There are examples in the single-period model in which such a policy is not optimal. However, if the holding and shortage costs are linear functions of their arguments ($h(u) = h \cdot u$ and $p(u) = p \cdot u$), or more generally if $L(y)$ is convex, then the optimal policy for the single-period model is (S, s) [Chap. 8 in Reference 2].

However, even with the assumption of linear holding and shortage costs, the literature is very meager on the properties of optimal policies for the dynamic model. There is a result due to Bratten, which is described in Chapter 9 of Reference 2, to the effect that if the density of demand is decreasing, then the optimal policy for the dynamic model is defined by a sequence of pairs of critical numbers $(S_1, s_1), (S_2, s_2), \dots$. The only other result is due to Karlin [2] and says that if ϕ has a monotone likelihood ratio, the holding and shortage costs are linear and $c + h > \alpha p$, then the optimal policy is of the same sort. Both of these results are rather restrictive, the former by virtue of the requirement of a decreasing density, and the latter by the severe constraint on the costs.

In this paper we shall show that when the holding and shortage costs are linear, or more generally when $L(y)$ is convex, and the ordering cost is as described above, then the optimal policy in the dynamic problem is always of the (S, s) type without any additional conditions.

The two results mentioned above are based on a study of the functions

$$(4) \quad G_n(y) = cy + L(y) + \alpha \int_0^{\infty} C_{n-1}(y-\xi)\phi(\xi)d\xi.$$

It is optimal to order from x , if and only if there is some y larger than x , with $G_n(x) > K + G_n(y)$, and if we do order from x , it is to that $y > x$ which minimizes $G_n(y)$. (See equation (2).) When either Bratten's condition or Karlin's condition is assumed, it may be shown that $G_n(y)$ decreases to a minimum and subsequently increases. If the minimum is denoted by S_n and s_n is defined by

$$(5) \quad G_n(s_n) = G_n(S_n) + K,$$

then the policy defined by (S_n, s_n) is indeed optimal. However, a few numerical calculations are sufficient to show that the functions G_n do not always have this regular behavior; they may actually have a number of maxima and minima. The idea of the proof given in this paper is that while G_n may have a large number of maxima and minima, the oscillations are never sufficiently large to cause a deviation from the (S, s) policy.

Explicitly, what we shall demonstrate is that if $L(y)$ is convex than the following inequality holds:

Let $a \geq 0$. Then

$$(6) \quad K + G_n(a+x) - G_n(x) - aG_n'(x) \geq 0.$$

To see that (6) implies that the optimal policy is (S, s) , let us examine the graph of $G_n(x)$ in Figure 1 which illustrates a typical case in which more complex policies are to be expected.

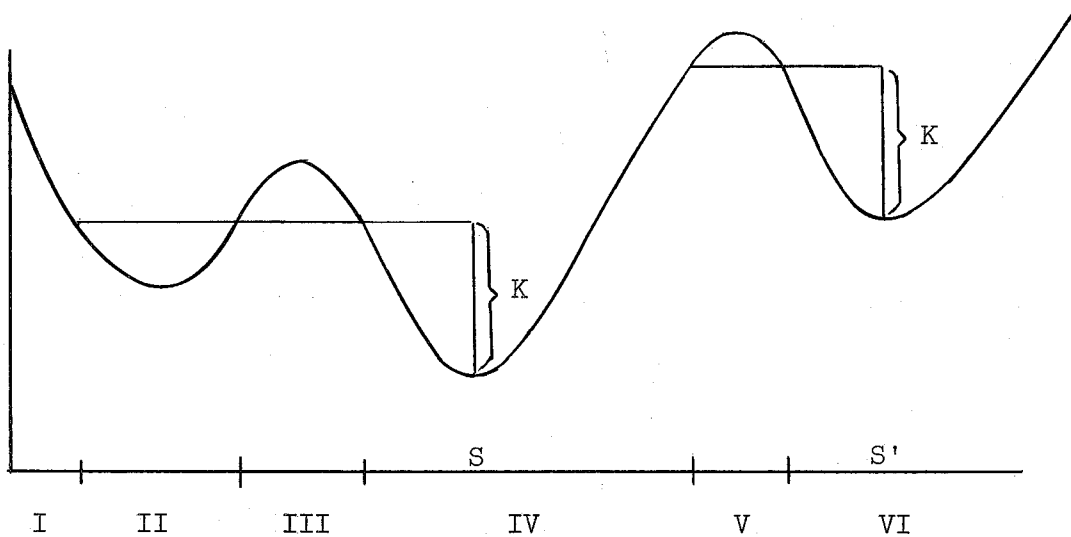


Fig. 1

With this type of graph for G_n , we would order in interval I to the point S, not order in interval II, order in III to S, not order in IV, order in V to S' and not order in VI. But if (6) is correct, this sort of graph is impossible; for let $x + a = S$ and x be the point in III at which the relative maximum is attained. For this value of x , $G_n'(x) = 0$ and (6) implies that $K + G_n(S) - G_n(x) \geq 0$, which contradicts the situation in Figure 1. The same argument may be applied to the point S'.

III. The Case of Zero Time Lag.

In this section we consider the case where delivery of orders is instantaneous and demonstrate that if $L(x)$ is convex and the ordering costs are given by (3), then the optimal policies are of the (S, s) type.

In order to demonstrate (6) we shall make use of the following definition:

Definition. Let K be ≥ 0 . We say that $f(x)$ is K -convex if

$$(7) \quad K + f(a+x) - f(x) - a \left\{ \frac{f(x) - f(x-b)}{b} \right\} \geq 0,$$

for all positive a and b and all x .

There are a number of simple properties of K -convex functions which will be of some use to us.

- (i) 0 - convexity is equivalent to ordinary convexity.
- (ii) If $f(x)$ is K -convex, then $f(x+h)$ is K -convex, for all h .
- (iii) If f and g are K -convex and M -convex respectively, then $\alpha f + \beta g$ is $\alpha K + \beta M$ -convex when α and β are positive. This property may be extended to denumerable sums and integrals.

Now let us turn our attention to a proof of (6). We shall show inductively that each of the functions $G_1(x), G_2(x), \dots$ are K -convex. Since each of these functions is differentiable, we obtain (6) by letting $b \rightarrow 0$ in (7). This is clearly true for G_1 since $G_1(x) = cx + L(x)$ which is 0 -convex and therefore K -convex. Let us assume that G_1, \dots, G_n are K -convex. If we examine (4) we see that in order to demonstrate the K -convexity of $G_{n+1}(x)$, it is sufficient to show that $\int_0^\infty C_n(x-\xi)\phi(\xi)d\xi$ is K -convex, and by properties ii and iii described above, it is sufficient to show that $C_n(x)$ is K -convex.

The K-convexity of $C_n(x)$ may be shown as follows. We first notice that the argument of Section 2 demonstrates, as a consequence of the K-convexity of $G_n(x)$, that the optimal policy for the n period problem is (S, s) . In other words if S_n is the absolute minimum of $G_n(x)$, and s_n is defined as the unique value of $x < S_n$, satisfying $K + G_n(S_n) = G_n(s_n)$, then the optimal policy is to order to S_n if $x < s_n$ and otherwise not to order. Therefore

$$(8) \quad C_n(x) = \begin{cases} K + c(S_n - x) + C_n(S_n) = K - cx + G_n(S_n); & x < s_n \\ - cx + G_n(x) & ; x > s_n \end{cases}$$

This is sufficient to demonstrate the K-convexity of $C_n(x)$. We distinguish four cases:

Case 1. $x - b > s_n$.

In this region $C_n(x)$ is equal to a linear function plus a K-convex function and is therefore K-convex.

Case 2. $x - b < s_n < x$.

In this case

$$(9) \quad \begin{aligned} & K + C_n(x+a) - C_n(x) - a \left\{ \frac{C_n(x) - C_n(x-b)}{b} \right\} \\ & = K + G_n(x+a) - G_n(x) - \frac{a}{b} \left\{ G_n(x) - K - G_n(S_n) \right\} \geq 0, \end{aligned}$$

since $K + G_n(x+a) - G_n(x) \geq 0$ (otherwise it would be optimal to order from x to $x + a$, contradicting the optimality of the (S, s))

policy for the n -period problem), and $K + G_n(S_n) - G_n(x) \geq 0$, for the same reason.

Case 3. $x-b < x < s_n < x+a.$

In this case the left-hand side of (9) is equal to $G_n(x+a) - G_n(S_n) \geq 0$ since S_n is the minimum of G_n .

Case 4. $x+a < s_n.$

In this region $C_n(x)$ is linear and therefore K -convex. This completes the induction, and demonstrates the optimality of (S, s) policies for the case considered in this section.

IV. The Case of a Time Lag in Delivery.

The character of optimal policies, in the case of a time lag in delivery, is very much dependent upon whether excess demand is backlogged or expedited. [Chap. 10 in (2).] If excess demand is backlogged it is known that the optimal policy is a function of stock on hand plus the orders which have been placed, but not yet delivered, whereas if excess demand is expedited, the optimal policy never has this simple form. We shall restrict ourselves to the backlog case.

Let the time lag be denoted by λ , so that an order placed at the beginning of a period is delivered λ periods hence at the beginning of the period. Consider a problem with a horizon of n periods, and let x represent current stock, x_1 stock to be delivered at the beginning of the next period, and generally speaking, x_j the stock to be delivered

j periods hence, where $j = 1, 2, \dots, \lambda-1$. Let $C_n(x, x_1, \dots, x_{\lambda-1})$ be the minimum expected cost for such a program. Then it is easy to see that this function satisfies an equation analogous to (2), namely

$$(10) \quad C_n(x, x_1, \dots, x_{\lambda-1}) = \text{Min}_{z \geq 0} \left\{ c(z) + L(x) + \alpha \int_0^{\infty} C_{n-1}(x+x_1-\xi, x_2, \dots, z) \varphi(\xi) d\xi \right\},$$

and that the minimizing value of z in this equation represents the optimal purchase.

We shall demonstrate, in this section, that if $L(x)$ is convex, and the purchase costs are given by (3), then the optimal policy is described by two numbers S_n and s_n as follows: if $x + x_1 + \dots + x_{\lambda-1} > s_n$ do not order, and if $x + x_1 + \dots + x_{\lambda-1} < s_n$ order up to S_n .

The proof begins with a repetition of the argument on p. 159 of (2). If equation (10) is analysed it will be seen that C_n may be written in the form (for $n \geq \lambda$)

$$(11) \quad C_n(x, x_1, x_2, \dots, x_{\lambda-1}) = L(x) + \alpha \int_0^{\infty} L(x+x_1-\xi) \varphi(\xi) d\xi + \dots + \alpha^{\lambda-1} \int_0^{\infty} \dots \int_0^{\infty} L(x + \dots + x_{\lambda-1} - \sum_{i=1}^{\lambda-1} \xi_i) \varphi(\xi_1) \dots \varphi(\xi_{\lambda-1}) d\xi_1 \dots d\xi_{\lambda-1} + f_n(x + x_1 + \dots + x_{\lambda-1}),$$

where $f_n(u)$ satisfies the functional equation

$$\begin{aligned}
 f_n(u) = \text{Min}_{z \geq 0} & \left\{ c(z) + \alpha^\lambda \int \dots \int L(u+z - \sum_{i=1}^{\lambda} \xi_i) \varphi(\xi_1) \dots \varphi(\xi_\lambda) d\xi_1 \dots d\xi_\lambda \right. \\
 (12) & \left. + \alpha \int_0^\infty f_{n-1}(u+z-\xi) \varphi(\xi) d\xi \right\},
 \end{aligned}$$

and that the minimizing value of z gives the optimal purchase if

$x + \sum_{j=1}^{\lambda-1} x_j = u$. (The initial conditions are $f_1(u) = \dots = f_\lambda(u) = 0$.) If we write $y = u+z$, then (12) is identical with (2), except for the fact that $L(y)$ has been replaced by $\alpha^\lambda \int \dots \int L(y - \sum_{i=1}^{\lambda} \xi_i) \varphi(\xi_1) \dots \varphi(\xi_\lambda) d\xi_1 \dots d\xi_\lambda$.

However if $L(y)$ is convex, then its replacement is also convex, and this is all that is necessary to repeat the argument of Section III. This concludes the proof of the optimality of (S, s) policies in the time lag case.

REFERENCES

- [1] Arrow, K. J., T. Harris, and J. Marschak, "Optimal Inventory Policy," Econometrica, XIX (1951), 250-72.

- [2] Arrow, K. J., S. Karlin, and H. Scarf, Studies in the Mathematical Theory of Inventory and Production. Stanford: Stanford University Press, 1958.

- [3] Bellman, R., I. Glicksberg, and O. Gross, "On the Optimal Inventory Equation," Management Science, II (1955), 83-104.

- [4] Dvoretzky, A., J. Kiefer, and J. Wolfowitz, "The Inventory Problem: I, Case of Known Distributions of Demand," Econometrica, XX (1952), 187-222.

- [5] Dvoretzky, A., J. Kiefer, and J. Wolfowitz, "On the Optimal Character of the (S, s) Policy in Inventory Theory," Econometrica, XX (1953), 586-96.

STANFORD UNIVERSITY

Technical Report Distribution List
 CONTRACT Nonr-225(28)
 (NR 047-019)

Armed Services Technical Information Agency Arlington Hall Station Arlington 12, Virginia	5	Commanding Officer U.S. Naval Ammunition Depot Earle Red Bank, New Jersey	1
Commanding Officer Office of Naval Research Branch Office The John Crerar Library Building 86 East Randolph Street Chicago 1, Illinois	1	Industrial College of the Armed Forces Fort Lesley J. McNair Washington 25, D. C. Attn: Mr. L. L. Henkel	1
Commanding Officer Office of Naval Research Branch Office 346 Broadway New York 13, New York	1	Director National Science Foundation Washington 25, D. C.	1
Commanding Officer Office of Naval Research Branch Office Navy No. 100 c/o Fleet Post Office New York, New York	2	Director National Security Agency Attn: REMP-1 Fort George G. Meade, Md.	1
Commanding Officer Office of Naval Research Branch Office 1000 Geary Street San Francisco 9, California	1	Director Naval Research Laboratory Washington 25, D. C. Attn: Technical Information Officer	6
Commanding Officer Office of Naval Research Branch Office 1030 East Green Street Pasadena 1, California	1	Naval War College Logistics Department, Luce Hall Newport, Rhode Island	1
Commanding Officer U. S. Army Sig. Research Unit P. O. Box 205 Mountain View, California	1	Office of Technical Services Department of Commerce Washington 25, D. C.	1
Logistics Branch Room 2718, Code 436 Office of Naval Research Washington 25, D. C.	2	Dr. Edward Barankin University of California Berkeley 4, California	1
		Dr. Richard Bellman The RAND Corporation 1700 Main Street Santa Monica, California	1
		Dean L. M. K. Boelter Department of Engineering University of California Los Angeles 24, California	1

Professor S. S. Cairns, Head Department of Mathematics University of Illinois Urbana, Illinois	1	Professor David Gale Department of Mathematics Brown University Providence, Rhode Island	1
Dr. E. W. Cannon Applied Mathematics Division National Bureau of Standards Washington 25, D. C.	1	Mr. Murray A. Geisler The RAND Corporation 1700 Main Street Santa Monica, California	1
Dr. A. Charnes The Technological Institute Northwestern University Evanston, Illinois	1	Mrs. Dorothy M. Gilford Office of Naval Research Code 433 Room 2709, T-3 Building Washington 25, D. C.	1
Dr. Randolph Church, Chairman Department of Mathematics and Mechanics U. S. Naval Postgraduate School Monterey, California	1	Dr. Theodore E. Harris The RAND Corporation 1700 Main Street Santa Monica, California	1
Professor William W. Cooper Graduate School of Industrial Administration Carnegie Institute of Technology Pittsburgh 13, Pennsylvania	1	Dr. Isadore Heller Navy Management Office Washington 25, D. C.	1
Dr. George B. Dantzig The RAND Corporation 1700 Main Street Santa Monica, California	1	Dr. C. C. Holt Graduate School of Industrial Engineering Carnegie Institute of Technology Schenley Park Pittsburgh 13, Pennsylvania	1
Document Center Stanford Research Institute Menlo Park, California	1	Professor J. R. Jackson Management Sciences Research Project University of California Los Angeles 24, California	1
Mr. Louis Doros Management Engineering Staff Bureau of Yards and Docks Navy Department Washington 25, D. C.	1	Dr. Walter Jacobs Hdqs. USAF, DSC/Comptroller AFADA-3D, The Pentagon Washington 25, D. C.	1
Rear Admiral H. E. Eccles, USN, (RET) 101 Washington Street Newport, Rhode Island	1	Capt. W. H. Keen Aircraft Design Division Bureau of Aeronautics Navy Department Washington 25, D. C.	1
Prof. Eberhard Fels 445 CL University of Pittsburgh Pittsburgh 13, Penn.	1		

Professor Harold Kuhn Department of Mathematics Bryn Mawr College Bryn Mawr 6, Pennsylvania	1	Professor H. N. Shapiro New York University Institute of Mathematical Sciences New York, New York	1
Professor S. B. Littauer Department of Industrial Engineering Columbia University 409 Engineering Building New York 27, New York	1	Professor H. A. Simon Head, Department of Industrial Administration Carnegie Institute of Technology Schenley Park Pittsburgh 13, Pennsylvania	1
Dr. W. H. Marlow The George Washington University Logistics Research Project 707 22nd Street Washington 7, D. C.	1	Mr. J. R. Simpson Bureau of Supplies and Accounts Code SS Arlington Annex U. S. Department of the Navy Washington 25, D. C.	1
Professor Jacob Marshack Cowles Foundation Box 2125 Yale Station New Haven, Connecticut	1	Professor R. M. Thrall Department of Mathematics University of Michigan Ann Arbor, Michigan	1
Mr Joseph Mehr Head, Operations Research Desk U.S.N. Training Device Center Port Washington, Long Island, N.Y.	1	Professor L. M. Tichvinsky Department of Engineering University of California Berkeley 4, California	1
Professor Oskar Morgenstern Economics Research Project Princeton University 9-11 Lower Pyne Building 92 A Nassau Street Princeton, New Jersey	1	Professor James Tobin Cowles Foundation for Research in Economics Box 2125, Yale Station New Haven, Connecticut	1
Professor R. R. O'Neill Department of Engineering University of California Los Angeles, California	1	Dr. C. B. Tompkins, Director Numerical Analysis Research University of California 405 Hilgard Avenue Los Angeles 24, California	1
Dr. I. Richard Savage School of Business, Vincent Hall University of Minnesota Minneapolis, Minnesota	1	Professor A. W. Tucker Department of Mathematics Fine Hall, Box 708 Princeton University Princeton, New Jersey	1
Mr. R. Mathiew Seiden Manufacturing Division Worthington Corporation Harrison, New Jersey	1	Professor Eduardo Valenzuela Republica 517 - CIEF Santiago, Chile	1

Professor Jacob Wolfowitz
Department of Mathematics
Cornell University
Ithaca, New York 1

Dr. Max A. Woodbury
Department of Mathematics
New York University
University Heights
New York 53, New York 1

Additional copies for project
leader and assistants and reserve
for future requirements 50